



**Day Tours, Short Breaks & Holidays 2017**





### **About us**

Upton Coaches is a family business owned by the Thomas Family, we have been providing coaches for hire for over 20 years. Based on the Devon and Somerset border, 6 miles from Bampton near Tiverton we are ideally positioned to offer our services to Tiverton, Taunton and Minehead. We operate a modern fleet of coaches fitted with our recognised red and cream leather seats.

We are pleased to offer our Day excursions, Holidays and Short Breaks for 2017! Further information can be found on our website

**[www.uptoncoaches.co.uk](http://www.uptoncoaches.co.uk)**

Pick up points are Upton Coaches depot, Bampton War Memorial, Tiverton Bus Station, Sampford Peverell car park, Junction 27 M5, Rock Well Green Bus Stop near Barley Mow pub & Longforth Coach Park (entrance to Asda) Wellington.

Other collections en route can be arranged on booking.

### **Did you know you can hire our coaches for private hire?**

Our coaches range from 16 to 38 seat coaches, we offer coach hire for all occasions such as Weddings, Airport Transfers, Garden club outings, Day at the Races, Shopping outings and many more!

We offer a very professional service at competitive rates, we pride ourselves in the quality and cleanliness of our coaches, our friendly experienced staff are happy to help with all your requirements.

# January

.....

**Slimbridge Wildfowl Trust & Wetlands**  
**Tuesday 31<sup>st</sup> January**

**Adult £24.50pp**  
**Senior £22.00pp**

Welcome to the Slimbridge Wetland Centre, from birdwatchers to families there is plenty to discover all year round. Enjoy amazing wildlife up close with experiences to suit all ages offering access to a huge variety of wildlife. It comes as no surprise that this is an award winning day out.



# February

.....

**Painswick Rococo Garden – Snowdrop display and Stroud**  
**Tuesday 14<sup>th</sup> February**

**Adult £21.00pp**  
**Senior £20.00pp**

The Rococo garden has one of the largest naturalistic plantings of snowdrops in the country and is in many ways the spiritual home of Galanthus Atkinsii (snowdrop). Although many believe the Romans introduced snowdrops they are more likely to have been brought to England in the early 16th century.



**Craft for Crafters at Westpoint Exeter**  
**Thursday 16<sup>th</sup> February**

**Adult £19.00pp**  
**Senior £18.00pp**

The Westpoint Arena hosts one of the largest Hobby and Needlecraft Exhibitions in the South West. The show will feature a mass of crafting delights, it includes textile displays, demonstrations, lectures, workshops and over 170 national and local craft businesses selling crafting supplies.



**Evita – Bristol Hippodrome**  
**Saturday 18<sup>th</sup> February**

**£53.00pp Inc Admission**  
**7:30pm Performance**

Featuring some of the most famous and inspiring stage music ever written, including the classic songs Don't Cry For Me Argentina, Oh What A Circus and Another Suitcase in Another Hall, Tim Rice and Andrew Lloyd Webber's extraordinary musical Evita brings to life the dynamic persona of Eva Peron, wife of former Argentine dictator Juan Peron, Evita tells the story from her young and ambitious beginnings to the enormous wealth and power she gained and her ultimate rise to sainthood.





# March

.....

**Swindon Shopper**  
**Thursday 23<sup>rd</sup> March**

**£14.50pp Coach Only**

The centre of Swindon is fully pedestrianised and offers both an indoor and outdoor shopping experience. Whether you are in search of the latest fashion or have an eye for a bargain this is the place to be. There are lots of things to see and do in Swindon including a relaxing stroll around Lydiard House or shopping at the Mc Arthur Glen Designer Outlet. A visit to the Great Western Railway Steam Museum is a must. A truly great day out.



# April

.....

**Clarkes Village**  
**Tuesday 11<sup>th</sup> April**

**£12.00pp Coach Only**

The designer outlet of Clarkes Village is located in Street Somerset. Over 90 stores showcase some of the most desirable fashion and lifestyle brands offering savings of up to 60% off all year round. There are various places to eat and drink with well-known coffee shops located within the village.



**Cardiff**  
**Thursday 20<sup>th</sup> April**

**£15.00pp Coach Only**

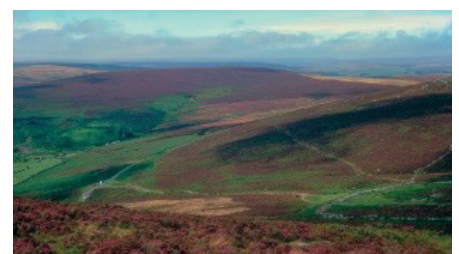
A visit to the capital of Wales is a must with the startling range of unique attractions, top class entertainment and quality shopping with a difference. Visit the castle which is steeped in history, take a stroll to the millennium centre or just while away an hour at one of the many street cafes just watching the world go by. This is a superb day out not to be missed.



**Dartmoor & Lunch at The Peter Tavy Inn**  
**Friday 28<sup>th</sup> April**

**£21.00pp Inc 2 Course Lunch**

Dartmoor has some of the best scenery anywhere in the UK, its rugged moorland stretches for miles with the gorse and heather a real picture. The bleakness of the moor lends itself to some of the most famous books and films written, one being The Hound of the Baskervilles. Princetown is the home of Dartmoor Prison a foreboding looking building built in 1809. The Peter Tavy inn is a charming 15th century pub in the pretty village of Peter Tavy on the western flanks of Dartmoor, it is only 1 mile from the A386 north of Tavistock.



**Lord of the Dance – Bristol Hippodrome**  
**Saturday 29<sup>th</sup> April**

**£60.00pp Including Admission**  
**8:00pm Performance**

Star of hit Irish dance show Riverdance, Michael Flatley premiered his own visionary creation Lord of the Dance in 1996. Based on Irish folklore, this age old tale of good versus evil told through the universal medium of dance has charmed audiences worldwide ever since. Don't miss out on this truly awe inspiring show.



## May

.....

**Salisbury**  
**Thursday 4<sup>th</sup> May**

**£17.00pp Coach Only**

The picturesque heart of Salisbury is home to all your favourite stores as well as independent retailers offering interesting and unusual items you won't find on every high street. Visit the famous cathedral with the tallest spire in Britain (404 feet) and the oldest working clock. The cathedral close is an oasis of calm hidden behind massive walls include the National Trusts Mompesson House, the Salisbury Museum and Arundells (home of former Prime Minister Sir Edward Heath) This is an unmissable day out.



**Badminton Horse Trials**  
**Saturday 6<sup>th</sup> May**

**£16.00pp Coach Only**

The world's premier Three Day Event takes place in the Duke of Beaufort's Gloucestershire park. For many years now Badminton has welcomed the very best riders from around the world and this year is no exception. The British have a new team trainer to impress in Chris Bartle, previous Badminton winner and former mentor to the all conquering German squad.



**Dorchester Market & Weymouth**  
**Wednesday 10<sup>th</sup> May**

**£15.00pp Coach Only**

The county town of Dorset, Dorchester holds a weekly market on Weymouth Avenue, browse the many stalls pick up a bargain or just visit the main shopping centre. In the afternoon, we visit Weymouth a very popular seaside resort with a long promenade and sandy beach. Spend a couple hours strolling through the gardens or just sit and watch the world go by enjoying a Purbeck ice cream.



**Lacock Abbey – National Trust**  
**Thursday 11<sup>th</sup> May**

**Nat. Trust Members £17.00pp**  
**Non-Members £28.50pp**

This National Trust property is located in the village of Lacock in Wiltshire, and features the Abbey once home to William Henry Fox Talbot. There is a museum located in the grounds dedicated to Fox Talbot which also features the monastic roots of the Abbey and Britain's birthplace of photography. The village of Lacock is a firm favourite for TV and Film producers with its picturesque streets and historic cottages, untouched by modern times. The village's most famous appearances include Downton Abbey, Pride and Prejudice and Cranford. A great day out, not to be missed.



**Malvern Spring Show**  
**Saturday 13<sup>th</sup> May**

**£34.50pp Including Admission**

This year the Malvern Spring Show promises to be the best ever with its wide range of show gardens, fantastic floral displays, spa gardens and much much more. The show situated in the Three Counties Showground has something for everyone, try to catch a glimpse of a garden celebrity, wander the many exhibits and craft stands. Join in the many talks and discussions going on all day. A great family day out.



**Plymouth Pirates Day**  
**Saturday 13<sup>th</sup> May**

**£14.00pp Coach Only**

The award winning Plymouth Pirate Weekend returns to the Barbican and Sutton Harbour this year with the promise of a fun packed family experience. The Barbican is Plymouth's delightful old port, full of narrow cobbled streets, Elizabethan warehouses, specialist shops, art galleries, café's and restaurants. The perfect place to find an original souvenir of Plymouth. A day of swashbuckling fun for adults and children alike.



**Hereford Market & Hay on Wye**  
**Thursday 18<sup>th</sup> May**

**£17.00pp Coach Only**

The produce and craft market adjacent to the Buttermarket is very popular in Hereford, take a walk through the old market centre and visit some of the well known stores, browse for that special bargain. A visit to Hay on Wye is truly amazing with this old market town located in Brecknockshire Wales. A tour of the town's second hand bookshops is a must and perhaps a visit to the remains of the Norman Castle.





**Party in the City – Bath (Evening Excursion)**  
**Friday 19<sup>th</sup> May**

**£15.00pp Coach Only**

The Bath Festival is the city's biggest Free party with over 130 events planned over the 10 days with some of the biggest and brightest names in literature, words and music celebrating the world heritage city of Bath.

**Cotehele – National Trust**  
**Tuesday 23<sup>rd</sup> May**

**Nat. Trust Members £14.00pp**  
**Non - Members £25.00pp**

This Tudor house owned by the National Trust is located above Saltash in Cornwall. The gardens and estate have been developed since the 16th century spanning 14 acres plus 12 acres of orchards. The fortified manor house is set high above the River Tamar housing a fascinating collection that reflects the antiquarian taste of the Georgian Edgcumbe family.



## June

.....

**Looe & Polperro**  
**Thursday 1<sup>st</sup> June**

**£15.00pp Coach Only**

In medieval times, there were two towns on opposite banks of the River Looe. East Looe included the fishing harbour, the main shopping centre and the best beach. West Looe is quieter, but also has shops, restaurants and hotels and leads to Hannafore with its fine views of Looe Island. The two towns are now joined by a bridge across the Looe River. Polperro is a picturesque fishing village steeped in history of smuggling and fishing told in the local heritage museum. It is easy to step back in time in this unspoilt fishing village with its narrow streets and cottages clinging to the Cliffside.



**Montacute House (National Trust) & Sherborne**  
**Tuesday 6<sup>th</sup> June**

**Nat. Trust members £14.00pp**  
**Non - Members £23.60pp**

This masterpiece of Elizabethan Renaissance architecture and design. With its towering walls of glass, glow of ham stone and its surrounding gardens it is a place of beauty and wonder. The house owned by the National Trust is located close to Yeovil in South Somerset. The Long Gallery which is the longest of its kind in England houses over 60 Tudor and Elizabethan portraits on loan from the National Portrait Gallery. Beautiful gardens that surround Montacute are constantly changing, filling the house with scent in summer.

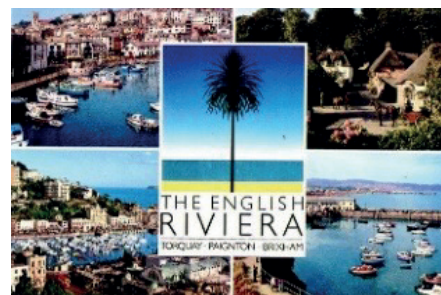




**The English Riviera (Torquay or Paignton or Brixham)**  
**Tuesday 13<sup>th</sup> June**

**£15.00pp Coach Only**

Choose one of the three resorts to visit on this day out to the English Riviera. Sample the delights of Torquay with its array of shops, promenade, marina and a host of attractions to suit all ages. Perhaps you prefer Paignton a true sea-side resort with a large beach, candy floss stalls, and the traditional fish and chip shops. Your last choice is the fishing port of Brixham with its small winding streets, famous harbour and picture postcard cottages. There is something for everyone on the English Riviera.



**Brecon Tour & Boat Ride**  
**Thursday 15<sup>th</sup> June**

**£24.00pp Including Boat Ride**

Brecon is the main town in the Brecon Beacons National Park located in the Usk Valley. Narrow compact streets, Georgian facades and the restored canal basin tell tales of times gone by. The 12th century cathedral dominates the town with other museums worth a visit. Our boat trip takes in the delights of the Brecon canal cruising through some of the spectacular scenery in the National Park.



**Tintagel & Boscastle**  
**Wednesday 21<sup>st</sup> June**

**£15.00pp Coach Only**

Tintagel is situated on the rugged north coast of Cornwall and is renowned for its association with the legend of King Arthur and his Knights of the Round Table. The magic is captured by the castle which is accessed from the mainland by a steep pathway. Boscastle is a small village on the North Cornwall Coast lying in an area of outstanding beauty with a small harbour at the lower end of the village. In 2004 the village was devastated by a flood causing damage to a wide area of the harbour and surrounding properties. The floods were the worst in local memory and memories of that dreadful day can be seen in the local museum.



**Padstow and Port Isaac**  
**Thursday 22<sup>nd</sup> June**

**£16.00pp Coach Only**

Padstow is a charming working fishing port surrounded by glorious sandy beaches, at the head of the Camel River. Watching the everyday ebb and flow of harbour life is a perfect way to spend a day. With popular eateries such as Rick Stein's Seafood Restaurant. Port Isaac is a traditional fishing village with a vibrant local community in North Cornwall and home to the TV series Doc Martin starring Martin Clunes. It's a truly picturesque village with narrow winding streets lined with whitewashed cottages that head down to the harbour where you can watch local fishermen landing their daily catch of fish, crab and lobsters.



**Stourhead Gardens – National Trust**  
**Tuesday 27<sup>th</sup> June**

**Nat.Trust Members £15.00pp**  
**Non - Members £28.60pp Inc. Admission**

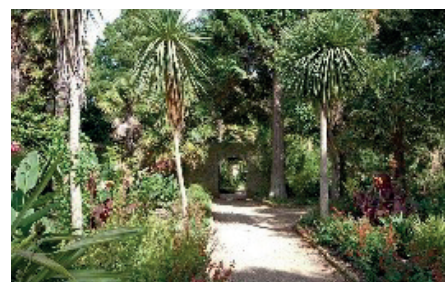
This Palladian house and world famous landscape gardens first opened in the 1740s, described as a living work of art. The gardens has at its centrepiece a magnificent lake reflecting classical temples, mystical grottoes, and rare and exotic trees and offers a day of fresh air and discovery. Uncover the fascinating history of Stourhead house with its unique Regency library, Chippendale furniture and inspirational paintings. The house is set in picnic perfect lawns and extensive parkland.



**Abbotsbury Gardens & Swannery**  
**Thursday 29<sup>th</sup> June**

**Adult £29.00 Inc. Admission**  
**Child £25.00 Inc. Admission**

The Subtropical Gardens at Abbotsbury are well worth a visit and quoting Alan Titchmarsh he said these are “one of the finest gardens I have ever visited”. Located close to Weymouth the gardens benefit from a warm and damp climate making the plants a picture to see. The Colonial Restaurant is very popular serving a vast array of dishes to suit all tastes. A short distance away is Abbotsbury Swannery the only place in the world where you are able to walk through the heart of a colony of nesting Mute Swans. You might be lucky to see newly born Cygnets.



## July

.....

**Stow on the Wold & the Lavender fields**  
**Tuesday 4<sup>th</sup> July**

**£19.50pp Inc. Admissions**

Stow on the Wold is a small market town in Gloucestershire. It is situated on top of an 800ft hill, at the convergence of a number of major roads through the Cotswolds. The quaint cottages surround the market square with the church dominating the skyline. Overlooking Broadway and the Vale of Evesham is the spectacular Cotswold Lavender Farm with fields upon fields of the purple plant. Here at the farm they grow, distil and sell top quality English Lavender Essential oil.



**Hampton Court Palace Flower Show**  
**Thursday 6<sup>th</sup> July**

**£47.50pp Inc. Admissions**

The RHS Hampton Court flower show this year promises to be a spectacular vision of colour and light. The ever popular show gardens to the world gardens there is something for everyone. The displays in the Water Gardens never cease to amaze, the very well laid out City Gardens with floral displays second to none. A day out not to be missed





**Dirty Dancing – Bristol Hippodrome**  
**Saturday 8<sup>th</sup> July – 7.30pm Performance**

**£64.00pp Inc. Admissions**

Dirty Dancing tells the story of Frances Houseman who while spending the summer in a holiday camp with her family falls in love with the camp's dance instructor Johnny Castle. Watch the sparks fly in this well written musical.



**Holiday Tour to Yorkshire (4 days)**  
**Sunday 9<sup>th</sup> – Wednesday 12<sup>th</sup> July**

**Shared Room £299.00pp**  
**Single Room £329.00pp**

See our holidays page for further information.

**Highclere Castle – (Downton Abbey)**  
**Thursday 13<sup>th</sup> July**

**£35.50pp Inc. Admissions**

Highclere Castle is not only a beautiful building, but a warm and welcoming home to the Earl and Countess of Carnarvon. Playing host to family and friends, but also to events and celebrations with visitors and guests from around the world. Many of the rooms and vistas will be familiar to viewers of Downton Abbey, both the Drawing Room and Dining Room forming the backdrop to the dryly withering put downs delivered by Maggie Smith as the Dowager, to some poor unfortunate relation. The distinctive gardens and park designed by Capability Brown, offer interest and enjoyment no matter what the season.



**Clovelly & Bude**  
**Saturday 15<sup>th</sup> July**

**£15.00pp Coach Only**

Discover the timeless village of Clovelly where the steep cobbled street tumbles down past gleaming white cottages to the tiny deep blue harbour. The locals take delivery of goods by sledge which can be seen at the side of the cottages. Donkeys once used to take visitors up and down the steep street but have now been retired, replaced by a Land Rover for those who do not fancy the walk. Moving down the coast into Cornwall lies the seaside resort of Bude popular for its sandy beaches, shops, cafes, and restaurants. The friendly welcome you receive from the locals makes this resort a must to visit. History dictates that Bude was notorious for wreckers who plundered ship wrecks off the coast some 80 ships coming to grief.



**Corfe Castle & Swanage**  
**Tuesday 18<sup>th</sup> July**

**£16.00pp Coach Only**

The ruins of Corfe Castle can be seen for miles around dominating the Purbeck Hills. The castle and surrounding areas are unique in as much as nearly all periods of history are celebrated, unequalled anywhere in the UK. You can be assured of a traditional warm welcome from the seaside resort of Swanage. A Victorian seaside town set in the heart of Purbeck and built around a beautiful sheltered bay with popular sandy beaches. Take a stroll along the promenade, Swanage has it all, a great place to visit.



**Windsor & River Cruise**  
**Thursday 20<sup>th</sup> July**

The royal town of Windsor lies 25 miles west of London famous for its castle and Great Park. The castle is home to the Royal Family with daily tours taking place, the centre of Windsor has all the shops associated with a large town, many cafes and restaurants and arts and crafts shops to while away a couple of hours.

**River Cruise with cream tea £39.30pp**  
**River Cruise only £32.00pp**



**Royal Welsh Show**  
**Tuesday 25<sup>th</sup> July**

The pinnacle event in the British agricultural calendar, the Royal Welsh Show is held at the showground in Llanewydd. Along with an exciting livestock competition with entries travelling from far and wide to compete, the show has something to interest everyone through its wide range of activities including forestry, horticulture, crafts, countryside sports, shopping, food and drink and a 12 hour programme of exciting entertainment, attractions and displays.



**£19.00pp Coach Only**

**Lyme Regis (Lifeboat Week)**  
**Thursday 27<sup>th</sup> July**

This seaside town lies midway between Dorchester and Exeter on the Dorset coast. It is famous for its Cobb Harbour Wall which has featured in many Films and TV Programmes. This week Lyme Regis hosts Life Boat Week in conjunction with the RNLI a charity which saves lives at sea. As you walk around Lyme and visit the different attractions and soak up the atmosphere of this special week you will come to realise the work carried out by the RNLI.



**£13.00pp Coach Only**

## August

.....

**Bourton on the Water & Burford**  
**Tuesday 1<sup>st</sup> August**

Regularly voted one of the prettiest villages in England, Bourton has a unique appeal to visitors and residents alike. There is plenty to do and see with a wealth of attractions and shops, restaurants and tea rooms, or if you prefer to enjoy some tranquil time by the River Windrush. Burford known as The Gateway to the Cotswolds remains wonderfully unspoilt and leaves its mark on anyone who has lived in or visited it. The pubs and restaurants are popular with visitors as are the shops supplying a good selection of produce, clothing, and period furniture.



**£16.00pp Coach Only**



**Longleat House and Safari Park**  
**Thursday 3<sup>rd</sup> August**

**Adult £37.50pp Inc. Admissions**  
**Senior £32.50pp Inc. Admissions**  
**Child £31.50pp Inc. Admissions**

With a history stretching back nearly 500 years Longleat is home to many treasures and family heirlooms that have huge historical significance. Wander through the sweeping corridors and grand rooms of Longleat to be transported back in time. Admire the grounds landscaped by the famous Capability Brown all this is a day out in itself. The Safari Park has been popular for many years with young and old alike, getting up close and personal to wild animals always has that thrill factor. Admire the graceful Giraffes, marvel at the Lions, and above all the capers in the Monkey enclosure. A day out not to be missed.



**Lyndhurst & New Forest Tour**  
**Tuesday 8<sup>th</sup> August**

**£16.00pp Coach Only**

The town of Lyndhurst known as the capital of the New Forest has something of interest for everyone with its wide variety of shops, cosy tea rooms and olde worlde pubs. The New Forest museum will give a unique guide into the forests history and heritage. Wild horses won't be able to drag you away from the New Forest once you have experienced its peace and fallen in love with the forest's idyllic woodland, open moors, heathland and the beauty of watching ponies, cattle, donkeys and deer roam free.



**National Firework Championships, Plymouth**  
**Thursday 10<sup>th</sup> August**

**£14.00pp Coach Only**

The venue for this year's firework extravaganza is once again Plymouth Hoe which provides a natural amphitheatre for the large pyrotechnics. Additional attractions on the Hoe make this a night to remember in a fierce competition of the best in Britain.



**Oxford**  
**Saturday 12<sup>th</sup> August**

**£17.00pp Coach Only**

Oxford the City of Dreaming Spires boasts 1500 listed buildings from every major period of British architectural history from the 11th century onwards. Oxford is flat with many of its major attractions right in the centre, explore the Castle, Bodleian Library not to mention the excellent shopping centre. It is easy to spend a day here with so much to do, picture yourself as Morse the great detective, hunt out the TV and film sets for those popular programmes.



**Ilfracombe Via Exmoor**  
**Thursday 17<sup>th</sup> August**

**£13.00pp Coach Only**

The seaside town of Ilfracombe lies on the rugged North Devon coast surrounded by sea on one side and the Exmoor National Park on the other. The bustling harbour is home to the controversial statue Verity commissioned by the artist Damian Hurst, a real talking point in the town. The town's shops are popular with visitors looking for that special gift.



**Seaton Tramway & Donkey Sanctuary**  
**Saturday 19<sup>th</sup> August**

**Adult £22.00pp Inc. Tram Ride**  
**Child £19.00pp Inc. Tram Ride**

Seaton is a small Devon seaside town on the South West Coast. This stretch of the Dorset and East Devon coastline became a UNESCO World Heritage Site in 2001. Seaton bay is part of Devon's Jurassic Coast line. The landscape of East Devon and West Dorset includes areas of outstanding natural beauty, Seaton, lies in one of these areas where the Axe valley meets the sea. The best way to see the beauty of the area is by tram, 3 miles of unspoilt countryside visiting Colyford and Colyton whilst following the River Axe. Not far from Seaton is the Donkey Sanctuary founded by Elisabeth Svendsen in 1969. We will say hello to over 500 donkeys, come and cuddle a miniature in our main yard or maybe adopt a donkey, well worth a visit.



**Coleton Fishacre – National Trust**  
**Tuesday 22<sup>nd</sup> August**

**Nat. Trust Members £15.00pp**  
**Non - Members £25.25pp Inc. Admission**

This National Trust property owned since 1982 is a 1920s country retreat complete with luxuriant garden by the sea. At Coleton, you can travel back in time to the Jazz Age with the building built in the arts and crafts style and is imbued with Art Deco elegance. Located near Kingswear, glimpses of the sea can be seen while strolling through the award-winning gardens. A day out not to be missed.



**Gloucester goes Retro**  
**Saturday 26<sup>th</sup> August**

**£15.00pp Coach Only**

On this special day, the pedestrian gate streets of Gloucester will be going back in time. Each street will be themed to a different era as Gloucester hosts this classic retro festival. Historic vehicles, cars, motorbikes, scooters and commercial vehicles will line the streets and businesses of all types, shops, restaurants, banks and public houses will all be joining in the fun by creating their own retro feel. Westgate Street will be themed from 1900 to 1949, Northgate Street 1950s, Eastgate Street 1960s and Southgate Street 1970-1980s. Music food and fashion will all play their part in the festival.



## September

.....

**Burghley Horse Trials**  
**Saturday 2<sup>nd</sup> – 3<sup>rd</sup> September**

**Sharing £169.00**  
**Single £199.00**

See our holidays page for further information



**Dyrham Park House & Gardens – National Trust**  
**Tuesday 5<sup>th</sup> September**

**Nat. Trust Members £16.00pp**  
**Non - Members £27.30pp Inc. Admissions**

The 17th century house nestles in 270 acres of ancient parkland, full of magnificent trees and breath taking views. Fallow deer roam freely, see the transformation of the West Garden a 21st century garden with echoes of the past complete with splendid borders, idyllic ponds and a wildflower orchard. Get a feel of 17th century life and explore Mr Blathway's apartment, take a behind the scenes tour and see conservation in action in the new Conservation Studio.



**Lanhydrock – (National Trust)**  
**Thursday 7<sup>th</sup> September**

**Nat. Trust Members £16.00pp**  
**Non - Members £27.75pp Inc. Admissions**

Lanhydrock House is a paragon of Victorian style and design. However, it only appears as it does because it was completely refurbished in the 1880's following a fire which destroyed parts of the building and ended the lives of its occupants. The magnificent gardens and wooded estate at Lanhydrock are well worth the visit no matter what time of the year.



**Widcombe Fair**  
**Tuesday 12<sup>th</sup> September**

**£15.00pp Coach Only**

Widcombe in the Moor is a small village in the heart of Dartmoor which every year hosts the fair attended by thousands of visitors. It is well known as the subject of a folk song of the same name, featuring Uncle Tom Copley and his friends. Brightly decorated stalls and craft stands surround the village green with plenty to see and do. A day out to join in with this local tradition.



**Brownsea Island and Poole**  
**Thursday 14<sup>th</sup> September**

**Nat. Trust members £25.00pp**  
**Non-members £30.50pp**  
**Includes Boat Ride and Admission**

Located in Poole Harbour the National Trust owned Brownsea Island is accessed from Poole Quay via a passenger ferry. The Island is famous for its Red Squirrels, wildlife and Scouting following in the footsteps of Lord Baden Powell who camped here with a group in 1907.



**Tyntesfield (National Trust) & Clevedon**  
**Tuesday 19<sup>th</sup> September**

**Nat. Trust Members £13.00pp**  
**Non - Members £25.60pp Inc. Admissions**

Tyntesfield, just a stones throw away from Bristol, was not built as a bold and extravagant statement of wealth, power or politics. Its purpose was simple, to serve as a family home. Once hidden and inaccessible, the ordinary and extraordinary lives and possessions of four generations of the Gibbs family are ready for discovery. Clevedon is a seaside town overlooking the Severn Estuary, it has a grade 1 listed pier, a long sea front with pebbled beaches and a marine lake. The ornamental gardens and Victorian bandstand are popular all within a 10 minute walk of each other.



**Malvern Autumn Show**  
**Saturday 23<sup>rd</sup> September**

**Adult £33.50pp Inc. Admissions**

This show is a celebration of food, the countryside, gardening and nostalgia held at the Three Counties Showground Malvern. This year look forward to the following; Grow It: with TV presenter Carol Klein, Taste It with TV chef Tom Kerridge, Relive It: head back in time to the Vintage Village Harvest It a celebration of the British harvest plus much more.



**National Trust Tour & Shrewsbury (5 Day Tour)**  
**Monday 25<sup>th</sup> – Friday 29<sup>th</sup> September**

**£356.00pp**

See holidays for more information.

## October

.....

**Tavistock Goose Fair**  
**Wednesday 11<sup>th</sup> October**

**£15.00pp Coach Only**

The annual Goosey Fair in Tavistock dates back to the early 12th century. Market traders come from all over the country to sell their wares and provide entertainment. The main street is the venue for all the stalls and sideshows providing a very enjoyable atmosphere.



**Westonbirt Arboretum & Tetbury**  
**Wednesday 18<sup>th</sup> October**

**Adult £23.00pp Inc. Admissions**  
**Child £18.00pp Inc. Admissions**

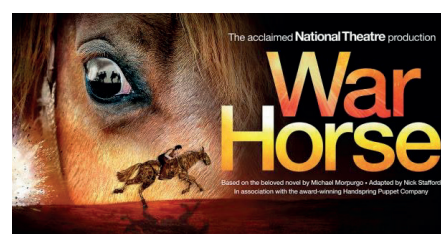
The name Trees for all Seasons is a fitting tribute to Westonbirt Arboretum as you take an Autumn walk around the grounds to savour the beautiful colours of the different species of trees. The 15,000 labelled trees come from all over the world, China, North America, Japan, Chile and other temperate climates. Westonbirt is managed by the Forestry Commission and the friends of Westonbirt planning different events throughout the season. Visit the large restaurant serving a fine selection of food and drink. For our passengers, the opportunity to visit Tetbury in the afternoon is always popular. Tetbury is well known for its 25 antique shops and its close proximity to Prince Charles' residence of Highgrove.



**War Horse – Bristol Hippodrome**  
**Saturday 21<sup>st</sup> October - 7.30pm Performance**

**£67.50pp Inc. Admissions**

War Horse is set at the outbreak of World War 1, when Joey, young Albert's beloved horse, is sold to the cavalry and shipped to France. He is soon caught up in enemy fire, and fate takes him on an extraordinary odyssey, serving on both sides before finding himself alone in no man's land. But Albert cannot forget Joey and, still not old enough to enlist, he embarks on a treacherous mission to find him and bring him home.

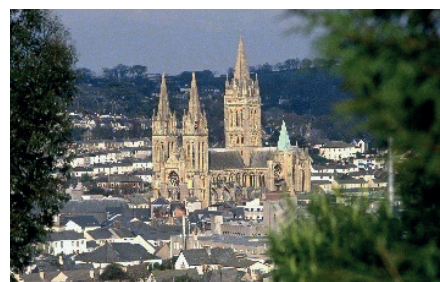




**Truro**  
**Tuesday 24<sup>th</sup> October**

**£16.00pp Coach Only**

Truro, the county town of Cornwall and the only city in the county is steeped in history and awe inspiring architecture. A visit to the Cathedral is a must with its green spire and gothic appearance. The city's heritage is as a market town and port dating back over 800 years, booming during the tin mining era. Stroll around the harbour, shop in the many stores or just watch the world go by on Lemon Quay.



## November

.....

**Bridgwater Carnival**  
**Saturday 4<sup>th</sup> November**

**£12.00pp Coach Only**

The Guy Fawkes Carnival is one of the world's largest illuminated winter processions taking over 2 hours to pass around the streets of Bridgwater. The spectacular carts often lit with 1000s of light bulbs take a year to build with volunteers working around the clock on the new theme. A spectacle not to be missed.



**Isle of Wight – Turkey & Tinsel**  
**Monday 6<sup>th</sup> – Friday 10<sup>th</sup> November**

**Sharing £260.00pp**  
**Single £310.00pp**

See our holidays page for further information

**Victorian Christmas Market – Gloucester Quays**  
**Saturday 18<sup>th</sup> November**

**£16.00pp Coach Only**

The hustle and bustle of a Victorian Christmas will be brought to life with a Victorian market, Dickensian characters, street entertainers, music and more at Gloucester Quays and the historic Docks.

Gloucester's impressive, historic docks and Gloucester Quays Outlet will act as the magnificent backdrop for a very Victorian Christmas experience. Explore an authentic Victorian market with over 250 stalls and producers selling high quality food, drink and hand-made festive gifts and enjoy choirs, brass bands and lots more.



**Cardiff Christmas Shopping**  
**Tuesday 21<sup>st</sup> November**

**£16.00pp Coach Only**

Wales offers stylish Christmas shopping from the vibrant city of Cardiff with big brand shops to the boutique town of Llandeilo with independent retailers. Come and get all your presents on a Christmas shopping trip in Wales.



**Exeter Christmas Market**  
**Saturday 25<sup>th</sup> November**

**£14.00pp Coach Only**

The Christmas Market held in the grounds of the wonderful Exeter Cathedral is based on showcasing small local independent retailers supported by some unique international traders. The colourful chalets fill the cathedral green selling all sorts of gifts, food, and drink. A real Christmas atmosphere can be had in and around the Cathedral green.



**Bath Christmas Market**  
**Thursday 30<sup>th</sup> November**

**£15.00pp Coach Only**

Looking for a truly fantastic festive shopping experience? Look no further than the award winning and beautiful Bath Christmas Market. Each year the centre of Bath is transformed into a magical Christmas shopper's paradise, as over 170 chalets packed full of gorgeous Christmas gifts line the streets surrounding the Roman Baths and Bath Abbey.



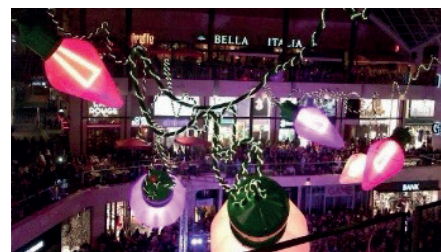
## December

.....

**Bristol Cabot Circus & Christmas Market**  
**Saturday 9<sup>th</sup> December**

**£14.00pp Coach Only**

The Bristol Christmas Market features decorated chalets selling traditional Christmas decorations, lights, nativity scenes and gifts as well as delicious festive food and drink. Located in the Broadmead centre next to the shopping complex of Cabot Circus the Christmas Market welcomes the return of local makers and producers selling a tempting selection of hand made gifts, including stain glass, contemporary jewellery, candles, and of course local cider, beers, patisserie, specialist breads, artisan cheeses jams and chutneys.



**Longleat Festival of Light**  
**Saturday 16<sup>th</sup> December**

**Adult £37.50pp**  
**Senior £32.50pp**  
**Child £31.50pp Inc. Admission**

This winter the unmissable Festival of Light returns to Longleat to transform the park into a glowing winter wonderland. As it's our Safari Park's 50th anniversary, Europe's largest Chinese Lantern Festival will be a celebration of all creatures great and small, with some help from the beloved characters of Beatrix Potter! Follow Peter Rabbit and his friend's around some famous scenes from the book's, and see our incredible animals take centre stage as we light up Longleat.



# January 2018

.....

## **Slimbridge Wetland Centre**

**January 2018 - Date to be confirmed**

**Adult £25.00pp  
Senior £22.50pp**

From birdwatchers to family day's out there is plenty to discover all year round. Enjoy amazing wildlife up close, with experiences to suit all ages offering access to a huge variety of wildlife, it's no surprise they are an award-winning day out! The big windowed modern café comes with gorgeous views of our Caribbean flamingos where freshly prepared hot and cold food will tickle your taste buds.



## **Plymouth – January Sales or The Hoe/Barbican**

**Thursday 18<sup>th</sup> January 2018**

**£14.00pp**

Plymouth has plenty of shops to cover all of your shopping needs and when you can shop no more you have options to relax, take the weight off your feet and get a drink or something to eat at one of our cafés, bars or restaurants. Shopping not your thin? Plymouth Hoe is the natural heart of Plymouth with breath taking views across Plymouth Sound, one of the most perfect natural harbours in the world. It is here where Sir Francis Drake, intrepid explorer and local hero, is immortalised in a statue, situated just a few metres from the green where he finished his game of bowls before heading out to defeat the Spanish Armada in 1588. The historic Barbican and Sutton Harbour are the heart of the city's heritage with the oldest buildings and the greatest number of historical stories.



# February 2018

.....

## **Painswick Rococo Garden - Snow Drop Display**

**February 2018 - Date to be confirmed**

**Adult £22.00pp  
Senior £21.00pp**

The Rococo garden has one of the largest naturalistic plantings of snowdrops in the country and is in many ways the spiritual home of Galanthus Atkinsii (snowdrop). Although many believe the Romans introduced snowdrops they are more likely to have been brought to England in the early 16th century.



## **Craft for Crafters at Westpoint Exeter**

**February 2018 - Date to be confirmed**

**Adult £20.00pp  
Senior £19.00pp**

The Westpoint Arena hosts one of the largest Hobby and Needlecraft Exhibitions in the South West. The show will feature a mass of crafting delights, it includes textile displays, demonstrations, lectures, workshops and over 170 national and local craft businesses selling crafting supplies.





# Holidays

.....

## Tour to Yorkshire and Great Yorkshire Show

4 Days

Sunday 9<sup>th</sup> - 12<sup>th</sup> July

All Inclusive Price - £299.00

Single Room Supplement - £30.00

### Day 1

We depart the West Country early morning, stopping for coffee and lunch, arriving at our hotel the 3 Star Best Western Burn Hall Hotel north of York our home for the next 3 nights. There will be time to relax before our evening meal.

### Day 2

After a leisurely breakfast we depart our hotel for the short drive to York for a full day visit. Take an hour to explore York Minster, stroll the streets looking for a bargain, do not miss the Railway Museum. We return late afternoon with time to relax before our evening meal

### Day 3

The highlight of our tour a full day at the Great Yorkshire Show. We depart our hotel after breakfast for the short drive to Harrogate and entry to the show. The show is one of the best known agricultural shows in the country with traders, farmers and visitors travelling from all over the country. The main arena displays attract a lot of attention, also the many trade stands. We return to our hotel exhausted but happy with time to unwind before our evening meal.

### Day 4

Sadly, time to depart our hotel for our journey home to the West Country stopping on route for coffee and lunch before arriving back late afternoon.

### What's included

All coach travel and excursions

3 Nights dinner bed and breakfast in the 3 star Burn Hall Hotel

Admission to the Great Yorkshire Show



## Burghley Horse Trials 2017

2 Days

Saturday 2<sup>nd</sup> – 3<sup>rd</sup> September

All Inclusive Price - £169.00

Single Room Supplement - £30.00

### Day 1

We depart early morning for our tour to the Burghley Horse trials going direct to the show to enjoy the day's events. After the close we will make our way to our hotel for our evening meal and overnight stay.

### Day 2

We depart our hotel mid-morning and make our way back towards the West Country. Stopping for lunch en route before returning home late afternoon.

### What's included

All coach travel and excursions

1 night dinner, bed and breakfast at the Best Western Plus Orton Hall Hotel & 4 star Spa

Admission to Burghley Horse Trials





## National Trust Tour & Shrewsbury

5 Days

Monday 25<sup>th</sup> – 29<sup>th</sup> September

Price - £356.00pp

### Monday

We depart the West Country mid-morning stopping for lunch en route, arriving at our hotel the Tillington Hall Hotel near Stafford, a 3 star rated hotel. There will be time to relax before our evening meal.

### Tuesday

Today, after breakfast we depart the hotel stopping for coffee before making our way to the 17th century house, Sudbury Hall National Trust. Here we spend the rest of our day admiring the craftsmanship of this house and reliving childhood memories in the museum. Returning to our hotel late afternoon.

### Wednesday

After a leisurely breakfast, we depart our hotel again stopping for coffee before making our way to Shugborough Estate National Trust. Shugborough has returned to the care of the National Trust this year, a rare survival of a complete estate, with all major buildings including mansion house, servants' quarters, model farm and walled garden. We return to our hotel once again for late afternoon.

### Thursday

We depart the hotel after breakfast and make our way to the town of Shrewsbury where we enjoy a hot refreshment while on our river cruise, taking in the sights of the River Severn. Once we have disembarked you will have time to explore the town before we make our way to Battlefield where there is a Farm shop, a museum celebrating the Battle of Shrewsbury, a Falconry Centre – and a café full of homemade fresh food. After our visit we shall return to the hotel for our last night.

### Friday

We depart the hotel mid-morning to make our journey home. Stopping en route for lunch before returning to the West Country late afternoon.

### What's Included

4 nights Dinner, Bed & Breakfast

River cruise

Cream tea

Non - National Trust members entry not included



**Day 1**

We depart the West Country early morning en route to Portsmouth and our ferry crossing to the Isle of Wight. We will stop for coffee at Wilton Shopping Village then continue to Portsmouth for our short crossing to Fishbourne. We then continue to our hotel, The Shanklin Hotel our home for the next 4 nights, in the town of the same name Shanklin. After check in you will have time to relax before dinner.

**Day 2**

Today is “Christmas Eve” and after a leisurely breakfast we depart for a full day tour of the island visiting Freshwater, Yarmouth, Ryde and a special visit to Osborne House in Cowes once home to Queen Victoria. After our visit we return to our hotel for our evening meal.

**Day 3**

Today is “Christmas Day” and after breakfast we have a half day tour to Newport the commercial centre of the island. We return to our hotel midday for our traditional Christmas Lunch with all the trimmings, in the afternoon entertainment is provided for your enjoyment. Relax after all the excitement before our evening meal.

**Day 4**

Today is “Boxing Day” and we depart after breakfast for a half day tour to the small village of Godshill with its quaint cottages, gift shops and cafes. We return to our hotel for midday lunch. In the afternoon you have time to relax, perhaps stroll into Shanklin or just spend a quiet hour in the hotel before our evening meal.

**Day 5**

Sadly we depart our hotel for the journey home to the West Country, stopping for lunch and arriving home late afternoon.

**What's Included**

All coach travel  
4 nights dinner, bed and breakfast in the Shanklin Hotel  
All evening entertainment.  
Lunch on Day 3 and Day 4  
1 full day and 2 half day excursions  
Visit to Osborne House



# Theatre Excursions

**Evita – Bristol Hippodrome**  
**Saturday 18<sup>th</sup> February**

**£53.00pp Inc Admission**  
**7:30pm Performance**

Featuring some of the most famous and inspiring stage music ever written, including the classic songs Don't Cry For Me Argentina, Oh What A Circus and Another Suitcase in Another Hall, Tim Rice and Andrew Lloyd Webber's extraordinary musical Evita brings to life the dynamic persona of Eva Peron, wife of former Argentine dictator Juan Peron, Evita tells the story from her young and ambitious beginnings to the enormous wealth and power she gained and her ultimate rise to sainthood.



**Lord of the Dance – Bristol Hippodrome**  
**Saturday 29<sup>th</sup> April**

**£60.00pp Including Admission**  
**8:00pm Performance**

Star of hit Irish dance show Riverdance, Michael Flatley premiered his own visionary creation Lord of the Dance in 1996. Based on Irish folklore, this age old tale of good versus evil told through the universal medium of dance has charmed audiences worldwide ever since. Don't miss out on this truly awe inspiring show.



**Dirty Dancing – Bristol Hippodrome**  
**Saturday 8<sup>th</sup> July – 7.30pm Performance**

**£64.00pp Inc. Admissions**

Dirty Dancing tells the story of Frances Houseman who while spending the summer in a holiday camp with her family falls in love with the camp's dance instructor Johnny Castle. Watch the sparks fly in this well written musical.



**War Horse – Bristol Hippodrome**  
**Saturday 21<sup>st</sup> October - 7.30pm Performance**

**£67.50pp Inc. Admissions**

War Horse is set at the outbreak of World War 1, when Joey, young Albert's beloved horse, is sold to the cavalry and shipped to France. He is soon caught up in enemy fire, and fate takes him on an extraordinary odyssey, serving on both sides before finding himself alone in no man's land. But Albert cannot forget Joey and, still not old enough to enlist, he embarks on a treacherous mission to find him and bring him home.







For more details on our Day Excursions, Short Breaks and Holidays, or for Private Hire, please see our website:

**[www.uptoncoaches.co.uk](http://www.uptoncoaches.co.uk)**

Call us on:

**01398 371271**

Email us at:

**[info@uptoncoaches.co.uk](mailto:info@uptoncoaches.co.uk)**



Upton Coaches Ltd, Upton Garage, Upton,  
Taunton, Somerset TA4 2HX